

## 2t30m telescopic boom marine crane onboard offshore service

### vessel

#### BRIEF INTRODUCTION

The telescopic box boom marine cranes can be tailor made to your required specification in different boom length and different lifting capacities, and for different sea state working conditions. The telescopic box boom marine cranes and offshore crane can be equipped with different accessories and class certificated by all leading classification societies.

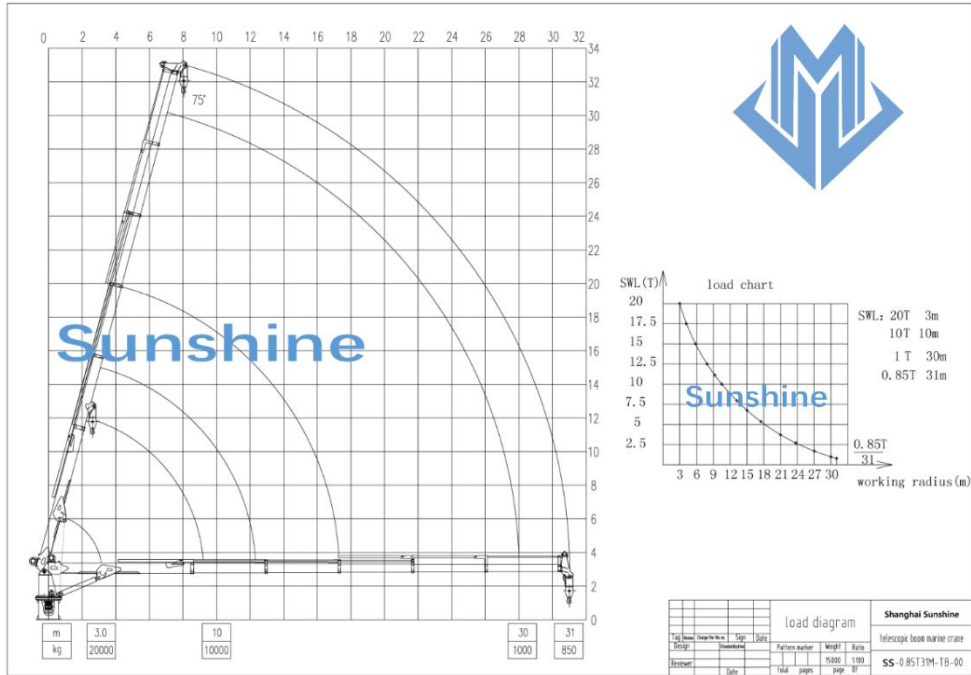
The crane is installed with a rolled steel pedestal for bolting or welding to deck foundation with a standard height of the crane. The different pedestal height is available base on customer`s requirement. The standard telescopic boom crane is supplied with an operator platform. Operator cabin is available base on customer`s requirement.

#### Technical specification

1	SWL	2t@30m
2	Max working radius	30m
3	Min working radius	3m
4	Hoisting speed	0~12m/min
5	Slewing speed	0.6r/min
6	Slewing angle	360° free
7	Luffing time	60s
8	Hook travel	30m
9	DFT of painting	320um
10	Extension time	100s
11	Working condition	
	Heel	≤ 5°
	Trim	≤ 2°
12	Electric motor	
	Power	45Kw
	Speed	1480r/min
	Power source	440V 50Hz,
	Protect class	F
	Working type	S1
13	Flow	100L/min

14	Design temperature	-10°~40°
15	Dead weight	~18500 kg

### Load chart



### General drawing

